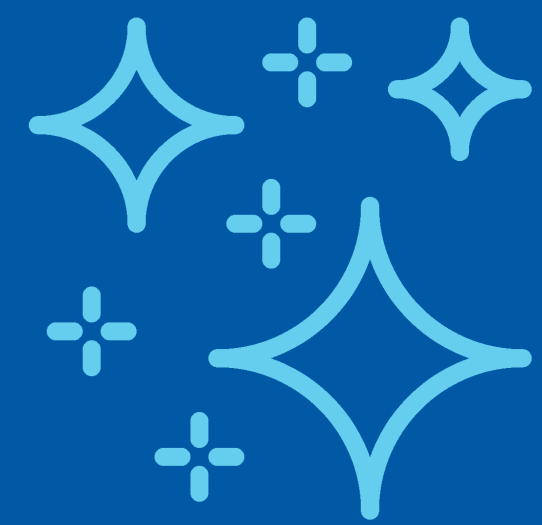


Delivering cutting-edge modern healthcare



Renovations to our front lobby will include:

1. Exquisite interior design upgrades and expanded spacious visitor seating including high-top workstations for laptop and tablet usage
2. Security and access enhancements and a digital information screen
3. A new Gift Shop
4. Dedicated bathroom facilities



Creating a new Emergency Department will:

1. Increase square footage, to improve the flow of patients, staff, and visitors
2. Increase privacy and create a quiet environment to improve patient/visitor experience
3. Allow Mather Hospital to better care for our aging patient population that have complex medical needs



Enhancing Surgical Suites will allow us to:

1. Prepare for more complex surgeries by building two 1,200-sq.-ft. ORs
2. House the technology that supports Mather's increase in complex surgeries that use CT scanners and da Vinci surgical robots
3. Perform more advanced neurovascular, gynecological, bariatric, and urological procedures



Expanding Cardiac Care:

1. Our new Cardiac Cath Lab opened in May 2021 and the Electrophysiology Lab opened in February 2022
2. These specialized state-of-the-art units diagnose and treat cardiovascular diseases— in a minimally invasive manner
3. Our door-to-balloon time is currently under 60 minutes, which is below the national goal



Transforming behavioral and mental health by:

1. Establishing a single facility to house our outpatient behavioral and mental health programs
2. Providing a behavioral health rapid access center to reduce demand on the Emergency Department
3. Expanding our Adolescent Partial Hospitalization Program and medication assisted treatment program



