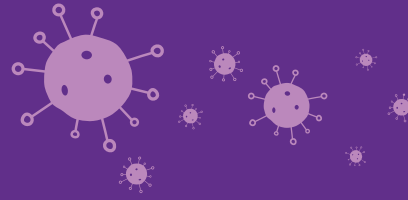


COVID-19

Your chances of catching it



Medium risk

- 10 minutes or more of close contact within 6 feet of someone who's symptomatic
- Caring for someone who has COVID-19 while consistently using recommended precautions

Low risk

Being in the same room with a confirmed case of COVID-19, but more than 6 feet away

High risk

- Close contact at home with someone who's tested positive
- Caring for someone who has COVID-19 while not using recommended precautions